

REFERENCES:
 OXFORD TOWN PLAN PREPARED BY THOMAS 1837.
 NUMEROUS RECORDED DEEDS AND PLATS AS REFERENCED ON SHEETS 2 THROUGH 4.

THE FIELD DATA UPON WHICH THIS PLAT IS BASED HAS AN AVERAGE CLOSURE PRECISION OF ONE FOOT IN 12,000 FEET, AND AN AVERAGE ANGULAR ERROR OF 03" PER ANGLE POINT FOR MULTIPLE CLOSED TRAVERSES, AND WAS ADJUSTED USING THE LEAST SQUARES METHOD.

FIELD DATA WAS COLLECTED USING A LEICA TS12 ROBOTIC TOTAL STATION AND A JAVAD TRIUMPH-LS DUAL-FREQUENCY RTK GLOBAL POSITIONING SYSTEM RECEIVER REFERENCING THE eGPS STATEWIDE NETWORK AND HAVING A RELATIVE POSITIONAL ACCURACY OF LESS THAN 0.04 FEET.

THE FIELD SURVEY WORK WAS COMPLETED BETWEEN NOVEMBER 2015 AND AUGUST 2016;
 JOHN HENDRIX, CREW CHIEF; BEN EIDSON, TECHNICIAN.

EASEMENTS OR RIGHTS-OF-WAY MAY EXIST WHICH ARE NOT SHOWN HEREON AND MAY BE RECORDED OR UNRECORDED.

COORDINATES DEPICTED HEREON REFERENCE THE GEORGIA STATE PLANE SYSTEM, WEST ZONE, NAD83, IN US FEET.

VERTICAL INFORMATION PROVIDED HEREON REFERENCES THE NAVD83 DATUM.

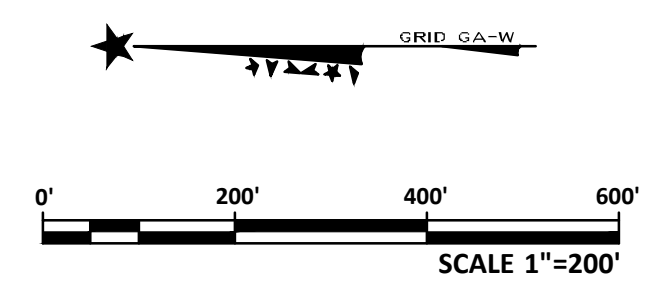
This survey was prepared in conformity with the Technical Standards for Property Surveys in Georgia as set forth in Chapter 180-7 of the Rules of the Georgia Board of Registration for Professional Engineers and Land Surveyors and as set forth in the Georgia Plat Act O.C.G.A. 15-6-67, Authority O.C.G.A. Secs. 15-6-67, 43-15-4, 43-15-6, 43-15-19, 43-15-22.

DENOTES PAINTED TREES OR FENCE NEAR PROPERTY LINE. LETTER IS CODE BELOW, NUMBER IS FEET FROM LINE, AND ARROW IS DIRECTION FROM LINE THAT EVIDENCE WAS FOUND.

TP: STEEL TEE POST W: WHITE PAINT
 WD: WOODEN FCE BW: BARBED WIRE
 PW: PAGE WIRE FCE HW: HOG WIRE
 TR: TREE CM: CONC. MONUMENT CL: CHAIN-LINK FCE
 IPE: SOLID ROD FD
 OTP: OPEN-TOP PIPE FD

LEGEND

- RIGHT-OF-WAY LINES
- - - ADJOINING PROPERTY LINE
- RECORD BOUNDARY LINES
- FORMER LOT LINES AND RW'S
- WIRE FENCE
- CHAIN-LINK FENCE
- WOODEN FENCE
- CREEK OR SHORELINE
- OLD SIDEWALK BED
- 2" ALUMINUM CAPPED 1/2" REBAR SET "CITY OF OXFORD R/W CORNER"
- OPEN-TOP PIPE FOUND
- SOLID ROD (REBAR) FOUND
- STONE OR CONCRETE MONUMENT FOUND AS DESCRIBED
- 3" DISC SET IN CONCRETE "CITY OF OXFORD CONTROL POINT"
- STEEL T POST FOUND
- BEARING CHANGE (NO PIN SET)
- SURVEYOR'S NAIL SET
- POWER POLE
- LIGHT POLE
- WATER VALVE
- FIRE HYDRANT
- P.O.B. POINT OF BEGINNING
- P.O.R. POINT OF REFERENCE
- N.O.F. NOW OR FORMERLY
- D.B. DEED BOOK
- P.B. PLAT BOOK
- LL LAND LOT
- OPEN-TOP PIPE
- STRUCTURE LOCATED FROM AERIAL PHOTO
- STRUCTURE LOCATED FROM FIELD SURVEY
- GRAVEL / UNPVED DRIVEWAY
- ASPHALT PAVEMENT OR DRIVEWAY
- CONCRETE DRIVEWAY OR WALKWAY
- BRICK DRIVEWAY OR SIDEWALK

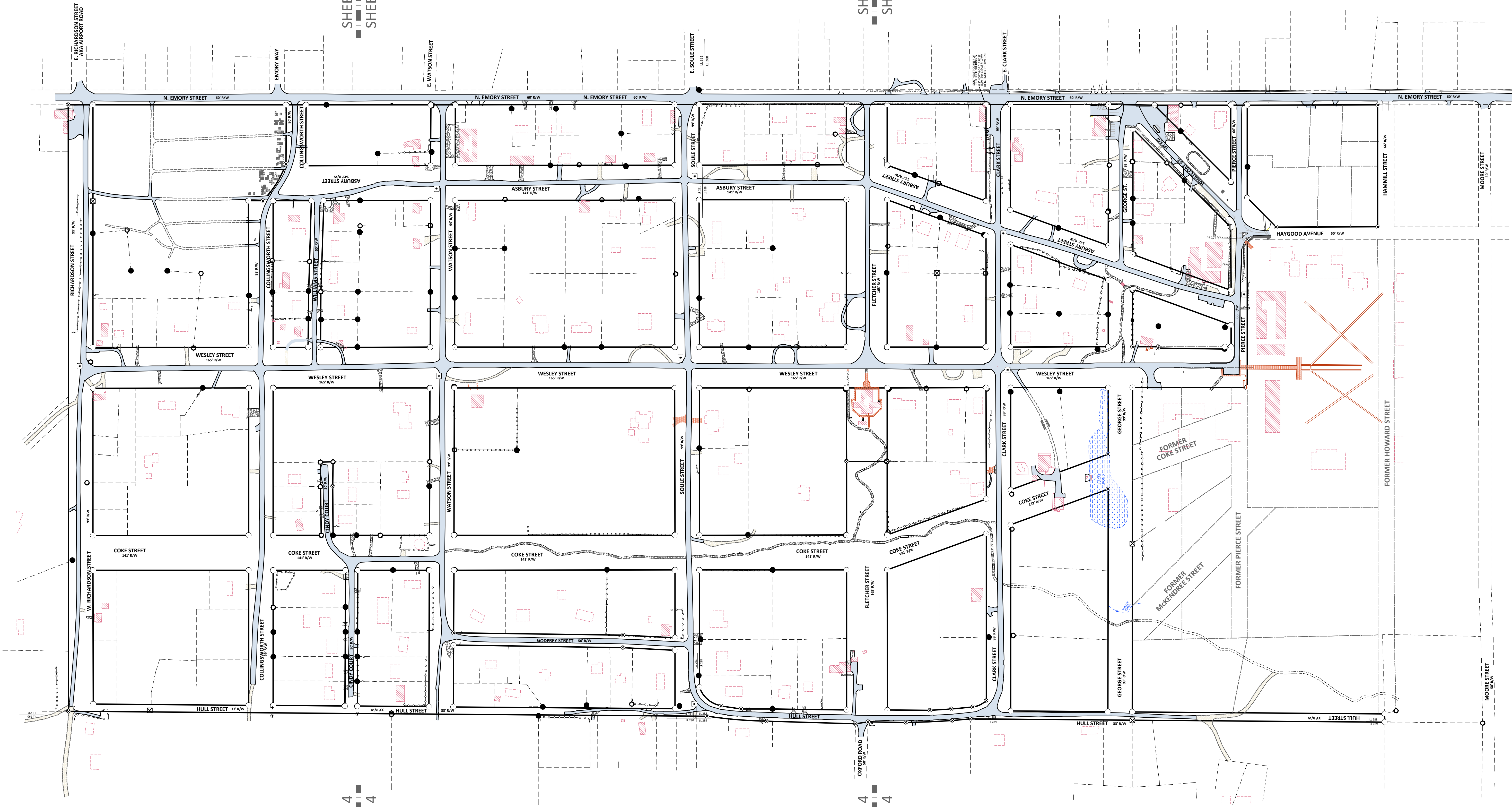


SHEET 4 OF 4
 SHEET 3 OF 4

SHEET 3 OF 4
 SHEET 2 OF 4

SHEET 4 OF 4
 SHEET 3 OF 4

SHEET 3 OF 4
 SHEET 2 OF 4



RIGHT-OF-WAY SURVEY FOR
THE CITY OF OXFORD
 LAND LOTS 288 AND 291, DISTRICT 9
 GEORGIA MILITIA DISTRICT 1525
 OXFORD, NEWTON COUNTY, GEORGIA

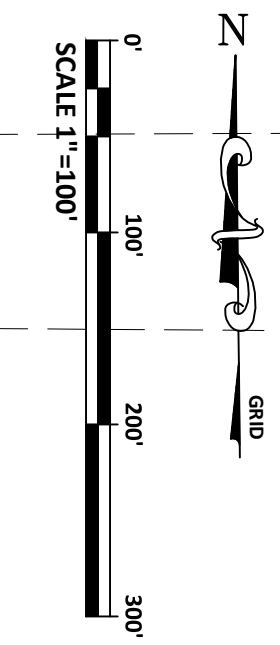
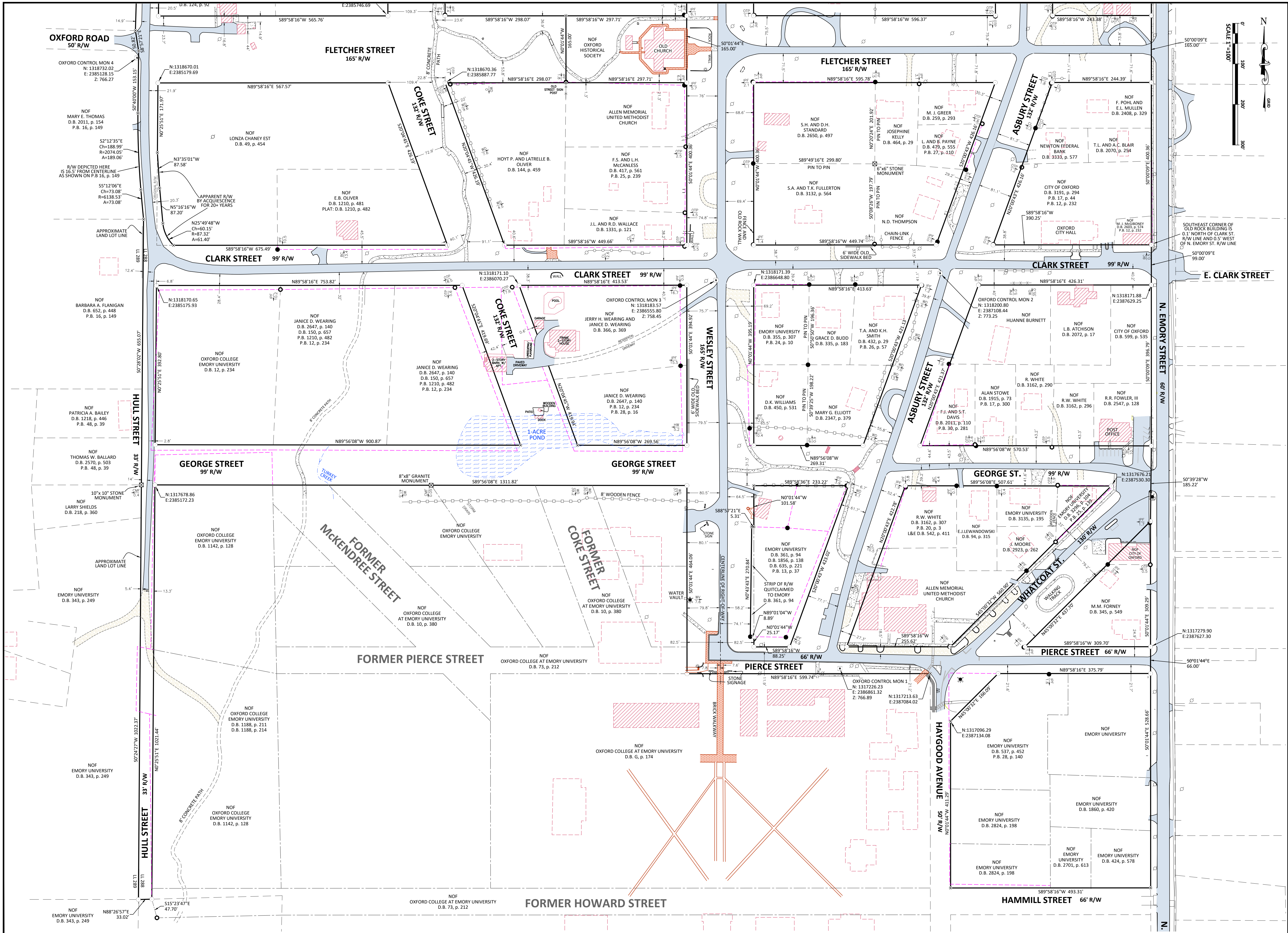


ORIGINAL TOWN PLAN
 RIGHTS-OF-WAY SURVEY

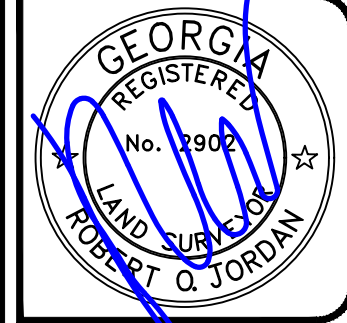
City of Oxford
 Newton County, Georgia

Rev	Revision Description	Date	As Noted
0	Initial Issue	12/20/16	

Sheet No.
INDEX
 1 of 4



JORDAN ENGINEERING
 144 N. WARREN ST. MONTICELLO, GA. 31064
 TELEPHONE: (706) 488-8999
 Land Planning & Surveying • State Classification

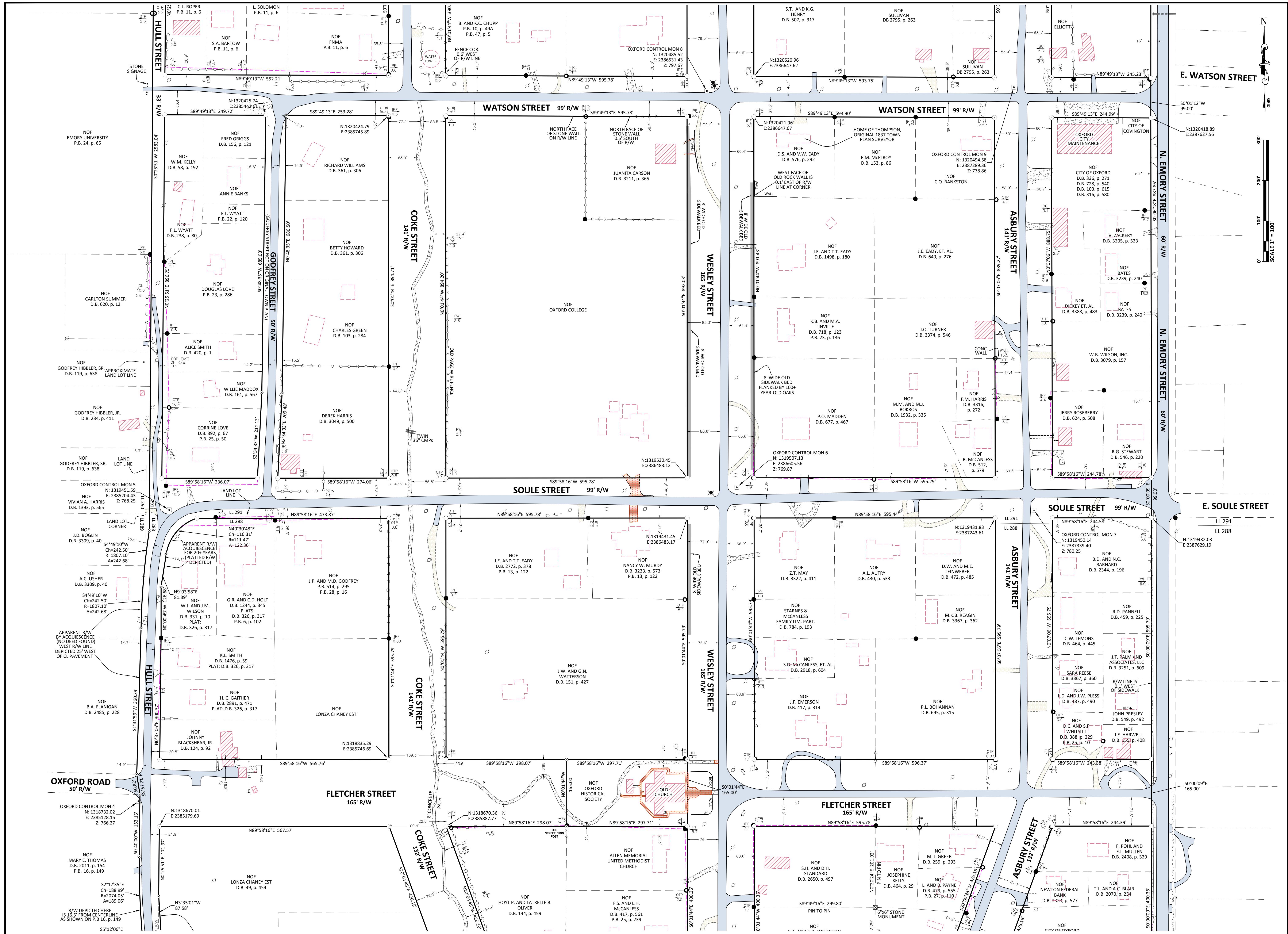


**OXFORD, GEORGIA
 ORIGINAL TOWN PLAN
 RIGHT-OF-WAY SURVEY**

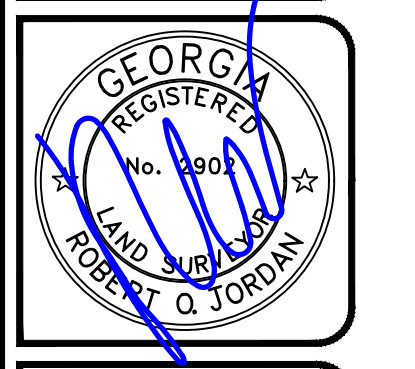
City of Oxford
 Newton County, Georgia

Rev	Revision Description	Date
0	Initial Issue	12/20/16

S:\CHL\OXFORD - RW SURVEY\OXFOW PLAT RW.DWG



JORDAN ENGINEERING
 144 N. WARREN ST., MONTICELLO, GA. 31084
 TELEPHONE: (706) 488-8899
 Land Planning & Surveying • State Classification

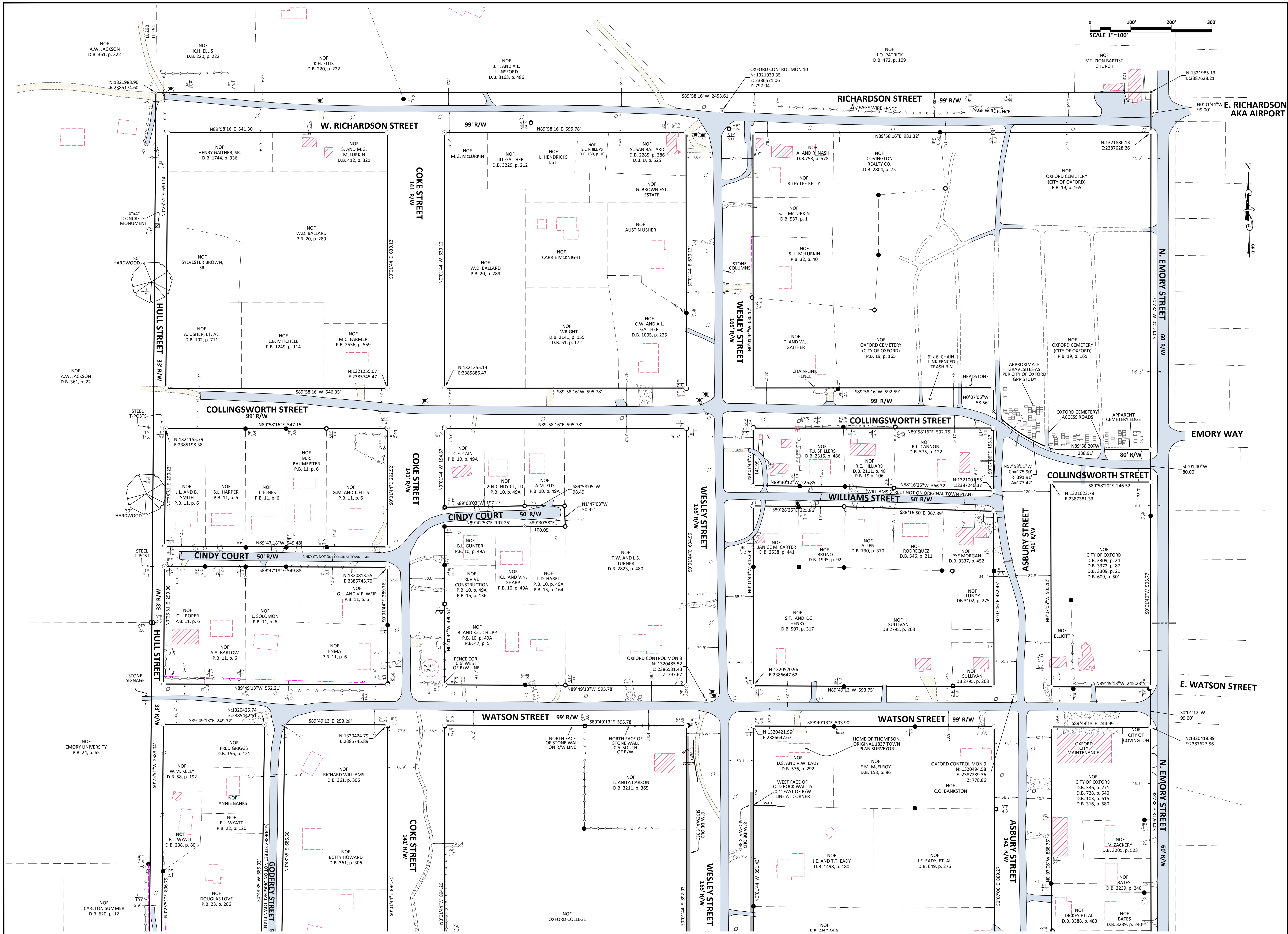


**OXFORD, GEORGIA
 ORIGINAL TOWN PLAN
 RIGHT-OF-WAY SURVEY**

City of Oxford
 Newton County, Georgia

Rev	Revision Description	Date	As Noted
0	Initial Issue	12/20/16	

53.CH16.OXFORD - RW SURVEY.DWG PLAT R7.DWG



SCALE 1"=100'

JORDAN ENGINEERING
 144 N. WARREN ST. MONTICELLO, GA. 31064
 TELEPHONE: (706) 488-8899
 Land Planning & Surveying • State Classification



OXFORD, GEORGIA
 ORIGINAL TOWN PLAN
 RIGHT-OF-WAY SURVEY

City of Oxford
 Newton County, Georgia

Rev	Revision Description	Date	As Noted
0	Initial Issue	12/20/16	

Sheet No.
4 of 4